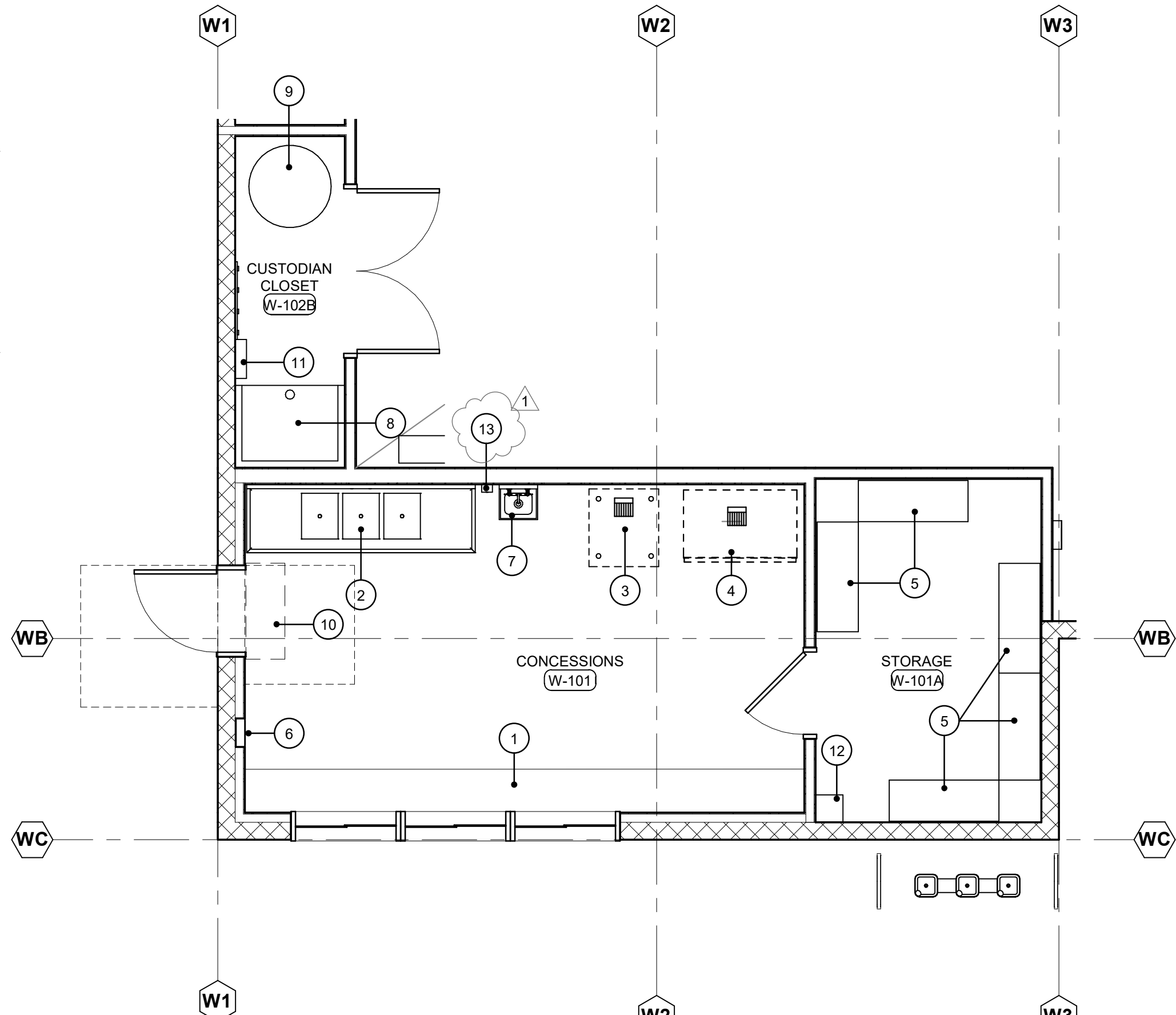


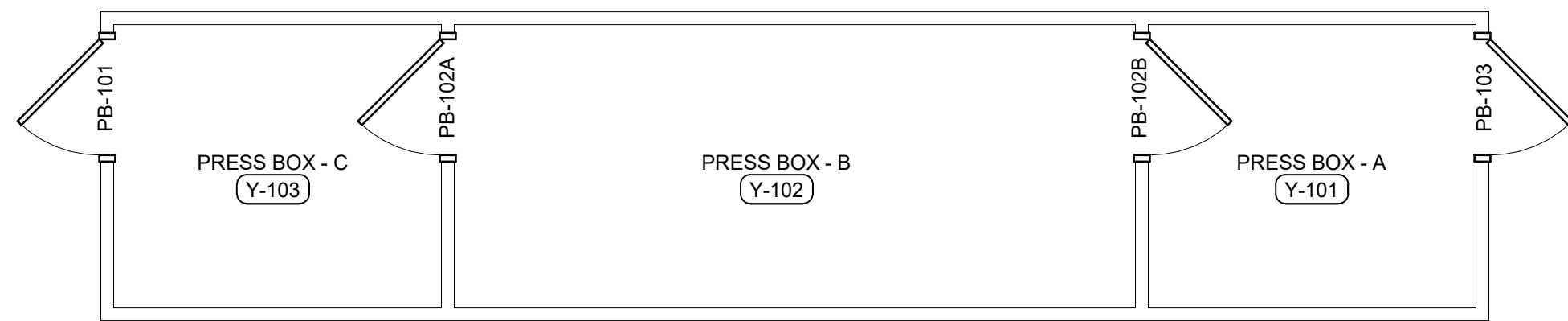
3 BUILDING V - HOME CONCESSIONS

Scale: 1/4" = 1'-0"



2 BUILDING W - VISITOR CONCESSIONS

Scale: 1/4" = 1'-0"



1 BUILDING Y - PRESS BOX

Scale: 1/4" = 1'-0"

LOUVER SCHEDULE						
LOUVER	WIDTH	HEIGHT	FRAME		TYPE	NOTE
			FINISH	MATERIAL		
UA	3'-4"	1'-0"	FACTORY	ALUM	A	
VA	3'-4"	2'-0"	FACTORY	ALUM	B	

RELITE SCHEDULE											
RELITE NO.	WIDTH	HEIGHT	FRAME			DETAILS				LABEL	REMARKS / CODED NOTES
			TYPE	MATERIAL	FINISH	HEAD	JAMB	JAMB	SILL		

BUILDING U - TICKET BOOTH											
U1	4'-4"	3	ALUM	FACTORY	2/A5.03	3/A5.03	3/A5.03	2/A5.03		6	

BUILDING V - HOME FIELD HOUSE											
V1	4'-0"	2	STL	PT	1/A5.04	4/A5.04	4/A5.04	3/A5.04		6	
V2	4'-0"	4	ALUM	FACTORY	8/A9.01	8/A9.01	8/A9.01	8/A9.01			
V3	3'-6"	3'-6"	5	ALUM	FACTORY	8/A9.01	8/A9.01	8/A9.01			

BUILDING W - VISITOR FIELD HOUSE											
W1	4'-0"	2	STL	PT	1/A5.04	4/A5.04	4/A5.04	3/A5.04			
W2	4'-0"	4	ALUM	FACTORY	8/A9.01	8/A9.01	8/A9.01	8/A9.01			
W4	2'-0"	2'-0"	5	ALUM	FACTORY	8/A9.01	8/A9.01	8/A9.01			

EQUIPMENT SCHEDULE				
KEYNOTE	EQUIPMENT	DRAIN	MANUFACTURER	COMMENTS
1	STAINLESS STEEL COUNTERTOP, TYP	-	-	-
2	3 COMPARTMENT SINK WITH 6" SPLASHGUARD	DIRECT	ELKAY - #14-3C16X20-2-24X	HOT & COLD WATER, SEE NOTE #1
3	ICE MACHINE	FLOOR SINK	SCOTSMAN MODEL #B330P	OFCI
4	REFRIGERATOR	FLOOR SINK	TURBO AIR MODEL #M3RF45-R-N	OFCI
5	FULL HEIGHT METAL SHELVES	-	METRO	12 X 48 WITH 6" HIGH LEGS, SEE NOTE #2
6	WALL MOUNTED FIRE EXTINGUISHER CABINET	-	-	-
7	ACCESSIBLE HANDWASH SINK	DIRECT	ELKAY - ELV2219SACC	HOT & COLD WATER
8	MOP SINK	DIRECT	AMERICAN STANDARD #7745.811	HOT & COLD WATER
9	WATER HEATER	-	A.O. SMITH EJCS-20	ELECTRIC 17 GAL.
10	DOOR ACTIVATED AIR CURTAIN	-	MARS	2471 CFM
11	WALL MOUNTED MOP RACK & CHEMICAL SHELF	-	BOBRICK MODEL #B-239	-
12	EMPLOYEE LOCKER	-	-	-
13	LIQUID SOAP DISPENSER (12.013)	-	-	OFCI

DOOR SCHEDULE																			
DOOR NO	PR	DOOR LEAF A	DOOR LEAF B	DOOR HT	TYPE	DOOR			TYPE	FRAME		HEAD	DETAILS			HARDWARE GROUP	LABEL	REMARKS / CODED NOTES	DOOR NO
						MATERIAL	FINISH			MATERIAL	FINISH		HINGE JAMB	STRIKE JAMB	SILL				
G26		4'-0"		6'-0"	C	CHAINLINK										B1		SEE DETAIL 11/A5.03	G26
G29	PR	4'-0"	4'-0"	6'-0"	C	CHAINLINK										A2		SEE DETAIL 9/A5.03	G29

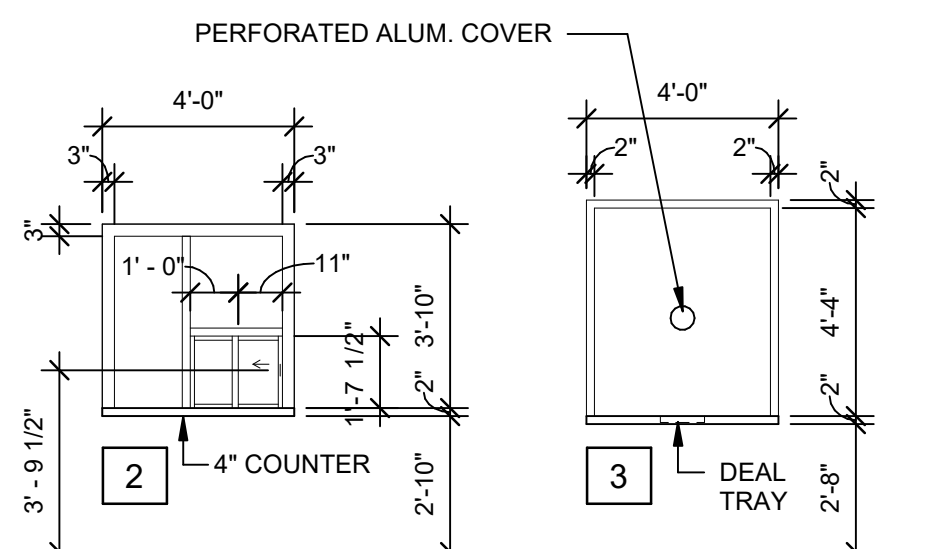
BUILDING U - TICKET BOOTH																			
U-101		3'-0"	0"	7'-2"	A	HM	PT	F-1	STL	PT	4/A5.04	3/A5.03	3/A5.03	5/A5.03	1		#3 LOUVER		U-101

BUILDING V - FIELD HOUSE																			
V-101		3'-0"	0"	7'-2"	A	HM	PT	F-1	STL	PT	2/A5.03	1/A5.03	1/A5.03	5/A5.03	1A		#3, 4, 8		V-101
V-101A		3'-0"	0"	7'-2"	A	HM	PT	F-1	STL	PT	12/A5.03	9/A5.03	9/A5.03	6/A5.03	4A		#4, 8		V-101A
V-102	PR	3'-0"	3'-0"	7'-2"	B	HM	PT	F-2	STL	PT	4/A5.03	3/A5.03	3/A5.03	5/A5.03	5		#3, 4, 5, 8		V-102
V-102A	PR	3'-0"	3'-0"	7'-2"	B	HM	PT	F-2	STL	PT	12/A5.03	9/A5.03	9/A5.03	6/A5.03	6		#5		V-102A
V-102B	PR	3'-0"	3'-0"	7'-2"	B	HM	PT	F-2	STL	PT	12/A5.03	9/A5.03	9/A5.03	6/A5.03	6		#6		V-102B
V-103		3'-0"	0"	7'-2"	A	HM	PT	F-1	STL	PT	2/A5.03	1/A5.03	1/A5.03	5/A5.03	2		#3		V-103
V-104		3'-0"	0"	7'-2"	A	HM	PT	F-1	STL	PT	1/A5.03	1/A5.03	1/A5.03	5/A5.03	2		#3		V-104
V-105		3'-0"	0"	7'-2"	A	HM	PT	F-1	STL	PT	4/A5.03	3/A5.03	3/A5.03	5/A5.03	4B		#8		V-105

BUILDING W - FIELD HOUSE																			
W-101		3'-0"	0"	7'-2"	A	HM	PT	F-1	STL	PT	2/A5.03	1/A5.03	1/A5.03	5/A5.03	1A		#3, 4, 8		W-101
W-101A		3'-0"	0"	7'-2"	A	HM	PT	F-1	STL	PT	12/A5.03	9/A5.03	9/A5.03	6/A5.03	4A		#4, 8		W-101A
W-102	PR	3'-0"	3'-0"	7'-2"	B	HM	PT	F-2	STL	PT	4/A5.03	3/A5.03	3/A5.03	5/A5.03	5		#3, 4, 5, 8		W-102
W-102A	PR	3'-0"	3'-0"	7'-2"	B	HM	PT	F-2	STL	PT	12/A5.03	9/A5.03	9/A5.03	6/A5.03	6		#5		W-102A
W-102B	PR	3'-0"	3'-0"	7'-2"	B	HM	PT	F-2	STL	PT	12/A5.03	9/A5.03	9/A5.03	6/A5.03	6		#6		W-102B
W-103		3'-0"	0"	7'-2"	A	HM	PT	F-1	STL	PT	2/A5.03	1/A5.03	1/A5.03	5/A5.03	2		#3, 8		W-103
W-104		3'-0"	0"	7'-2"	A	HM	PT	F-1	STL	PT	2/A5.03	1/A5.03	1/A5.03	5/A5.03	2		#3, 8		W-104

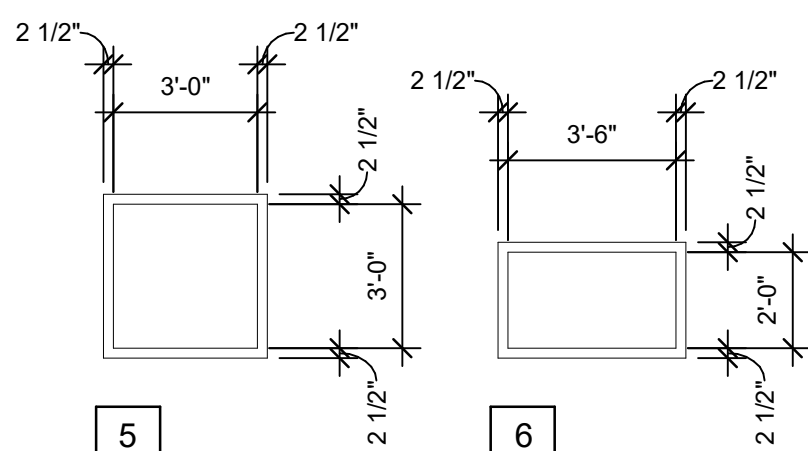
BUILDING X - ELECTRICAL ROOM																			
X-101		3'-0"	0"	7'-2"	A	HM	PT	F-1	STL	PT	4/A5.03	3/A5.03	3/A5.03	5/A5.03	3		#8		X-101

BUILDING Y - PRESS BOX																			
PB-101		3'-0"	0"	7'-0"	A	HM	PT	F-1	STL	PT	-	-	-	-	1		#7, 8		PB-101
PB-102A		3'-0"	0"	7'-0"	A	WD	STN	F-1	STL	PT	-	-	-	-	4		#7, 8		PB-102A
PB-102B		3'-0"	0"	6'-8"	A	WD	STN	F-1	STL	PT	-	-	-	-	4		#7, 8		PB-102B
PB-103		3'-0"	0"	7'-0"	A	HM	PT	F-1	STL	PT	-	-	-	-	1		#7, 8		PB-103



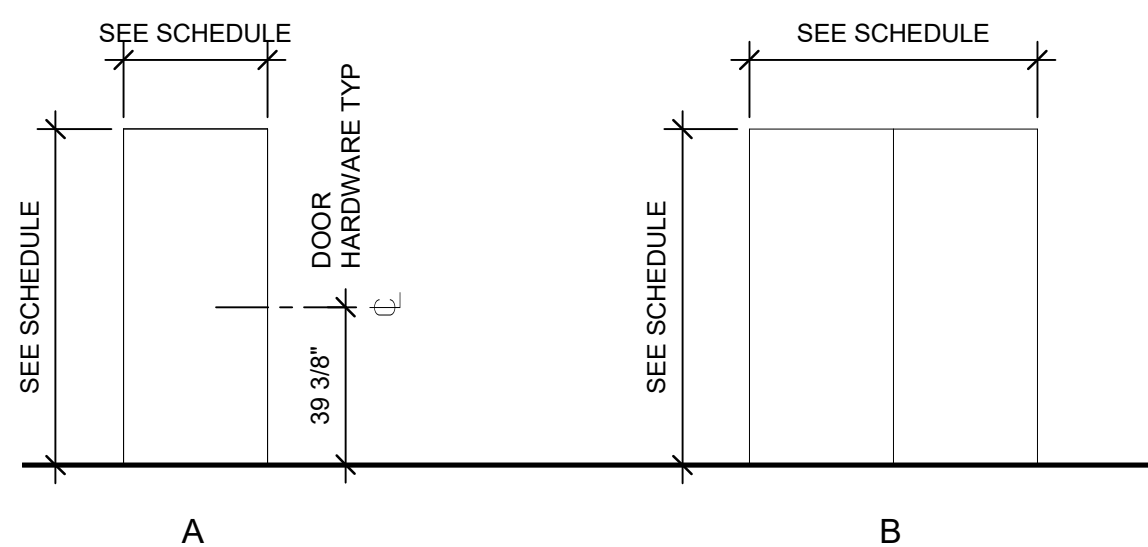
LOUVER TYPES

Scale: 1/4" = 1'-0"



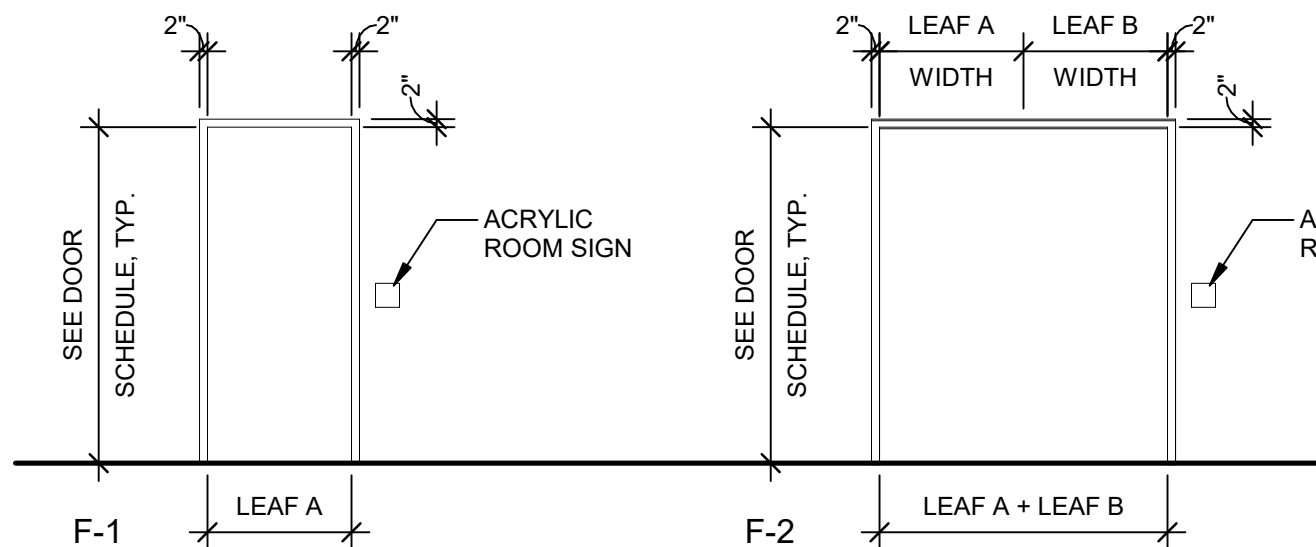
SKYLIGHT TYPES

Scale: 1/4" = 1'-0"



DOOR TYPES

Scale: 1/4" = 1'-0"



FRAME TYPES - DOOR

Scale: 1/4" = 1'-0"

ACCESSIBLE DOORS, GATES AND HARDWARE CBC 11B-404

DH1) PROVIDE ACCESSIBLE DOOR OR GATE LEAF WIDTH, MINIMUM 36" WIDE AND CAPABLE OF MAXIMUM SLB. FORCE OPERATION PER 11B-404.2.9. (NOTE THAT THE MAXIMUM ALLOWED WIDTH FOR A SWINGING EGRESS DOOR OR GATE IS 48" NOMINAL PER CBC 1010.1.1.)
DH2) STOREROOM OR SIMILAR HARDWARE FUNCTION TYPES REQUIRE TWO-HAND OPERATION AND DO NOT COMPLY WITH 11B-404.2.7. (NOTE THAT ACCESSIBLE HARDWARE IS NOT REQUIRED TO MEET THIS REQUIREMENT.)
DH3) PROVIDE CLASSROOM SECURITY HARDWARE. ROOMS WITH LIVE OR MORE OCCUPANTS IN KINDERGARTEN THROUGH TWELFTH-GRADE FACILITIES MUST BE LOCKABLE FROM THE INSIDE PER CBC 1010.1.1.1. CLARIFY ON DOOR SCHEDULE WHICH DOORS ARE REQUIRED TO MEET THIS REQUIREMENT.
DH4) PROVIDE HARDWARE WITH SLB. MAXIMUM UNLATCHING FORCE PER 11B-404.2.7 AND 11B-309.4. THIS REQUIREMENT APPLIES TO ALL DOOR HARDWARE, INCLUDING EXIT DEVICES.
DH5) UNLATCHING OF ANY DOOR SHALL NOT REQUIRE MORE THAN ONE OPERATION. SEE CBC 1010.1.9.5 FOR EXCEPTIONS.
DH6) PROVIDE ACCESSIBLE THRESHOLD OR THRESHOLD CONDITION PER 11B-404.2.5.
DH7) ON THE PUSH-SIDE OF THE DOOR, PROVIDE SMOOTH SURFACE WITHIN 10" OF FINISH FLOOR OR GROUND, FOR FULL WIDTH OF DOOR PER 11B-404.2.10.
DH8) IN-DOOR GLAZING AND VISION LIGHTS SHALL HAVE BOTTOM EDGE MAXIMUM 43" ABOVE THE FINISH FLOOR OR GROUND SURFACE PER 11B-404.2.11.
DH9) INDICATE ON PLANS AND/OR SPECIFICATIONS THAT HARDWARE COMPLIES WITH SFM STANDARD 12-10-3, SECTION 12-10-302.
-CROSS BARS FOR EXIT DEVICES SHALL EXTEND ACROSS NOT LESS THAN HALF OF THE DOOR OR GATE WIDTH.
-ENDS OF CROSS BARS SHALL BE CURVED, GUARDED OR OTHERWISE DESIGNED TO PREVENT CATCHING ON CLOTHING DURING EGRESS.

DOOR & RELITE CODED NOTES

- DOOR OR WINDOW SEALED TO PREVENT PASSAGE OF SMOKE.
- SCHEDULED DOOR WIDTH IS NOMINAL. EXACT DOOR WIDTH TO BE VERIFIED BASED ON ACTUAL MASONRY OPENING.
- KICKPLATE ON BOTH SIDES.
- PROVIDE DOOR STOP.
- PROVIDE FLUSH BOLT ON RIGHT SIDE.
- PROVIDE WINDOW BLINDS, MECHO SHADE OR APPROVED EQUAL.
- DOORS BY SOUTHERN BLEACHERS.
- DOGGING FOR ALL PANIC HARDWARE.

GENERAL DOOR & RELITE NOTES

- ALL DOORS TO BE 1 3/4" THICK, UNLESS NOTED OTHERWISE.
- SEE SPECIFICATIONS FOR ALL DOOR, RELITE, SIDELITE AND TRANSOM GLAZING TYPES.
- GLAZING DIMENSIONS FOR DOOR TYPES ARE TO INSIDE OF FRAME (CLEAR GLAZING AREA). ACTUAL CUTOFF AND TOTAL FRAME WILL BE SLIGHTLY LARGER.
- ALL DOOR HANDLES TO BE LEVER TYPE COMPLYING WITH ADA.
- ALL RELITE GLAZING AND LITES IN DOORS TO BE TEMPERED GLASS.

REVISIONS

1 ADDENDUM 1 02/01/2022

THIS APPROVAL IS FOR ITEMS WITHIN CLOUDED AREAS ONLY. FOR OTHER INFORMATION NOT CONTAINED WITHIN CLOUDED AREAS, REFER TO ORIGINAL DSA APPROVED PLANS.
DO NOT USE THESE PLANS AS SUBSTITUTE FOR THE ORIGINAL DSA APPROVED PLANS.



NORWALK LA MIRADA UNIFIED SCHOOL DISTRICT
LA MIRADA HIGH SCHOOL NEW FOOTBALL STADIUM PROJECT
13520 ADELA DRIVE, LA MIRADA, CA 90638

DSA # 03-120551

NAC
ARCHITECTURE

NAC NO. 161-19015
DATE 02/01/2022

ADDENDUM 1

DOOR & WINDOW SCHEDULES

A3.20